

## PAMA Visiting with Kids Check List

### *Plan Ahead*

- Check our Schedule** – Check the [Exhibitions](#) and [Calendar](#) page to see what is going on so you can decide the best day to visit.
- Let Your Kids Plan** – Check out our website and ask the kids what they want to see.
- Discuss How to Behave** – Things like using your inside voice, touching only when it says you may, and most importantly, have lots of fun!

### *When you Arrive*

- Visit the Front Desks** – for self-guided visit brochures, maps and a list of activities perfect for guiding you through PAMA.
- Strollers** – are allowed in the gallery spaces. We will ask you to store large bags in the coat and bag storage at the front desks.
- Baby Changing Stations** – are located in select washrooms. Please ask for locations at the front desk when you arrive.
- Only Pencils are allowed** – Pencils are gallery - friendly!
- Stop by our Hands-On Spaces** – take an activity break from walking around and stop by [Manning Square!](#) There are fun family-friendly activities for kids of all ages!

## What to Talk About

- Take a Moment to check out our Building** – Did you know PAMA used to be the [Peel County Jail](#) and [Courthouse](#)? Make sure to find our Jail Gallery for more information.
- Make it Fun** – Create a scavenger hunt and look together.
- Talk about what you See** – encourage your kids to use their imaginations! Talk about your memories and experiences and ask your children for their reactions to what they are seeing.

## Here are some examples of what to ask the kids



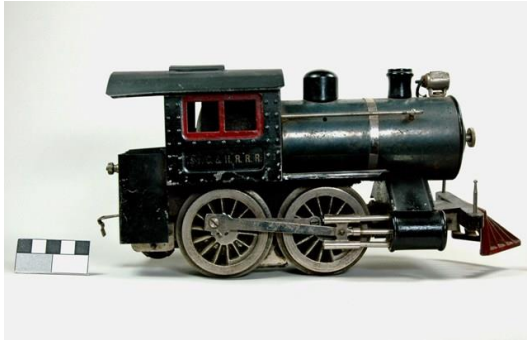
Charlotte Brock Morrell Schreiber  
 Untitled (Landscape in Winter with Children), n.d  
 Oil on Board  
 Gift of the Art Gallery of Peel Association

### Questions and some possible answers:

**What colours do you see?** – I see a blue in the sky and a red hood on one of the girls.

**What do you see?** I think I see a mother and daughter walking in the snow.

**What does it remind you of?** It reminds me of walking home from school in the winter.



Toy Locomotive, circa 1935  
Manufacturer - Lionel  
Black Metal with Red Cow-Catcher  
Gift of Mrs. Florence Chinn

**Questions and some possible answers:**

**What do you think this object is made of?** I think it is made of Metal

**Who do you think used this?** I think kids did because it looks like a toy

**Do you have a toy train?** No, but I have always wanted one.